

# Hawke's Bay Recovery

## Building back better, safer and smarter.

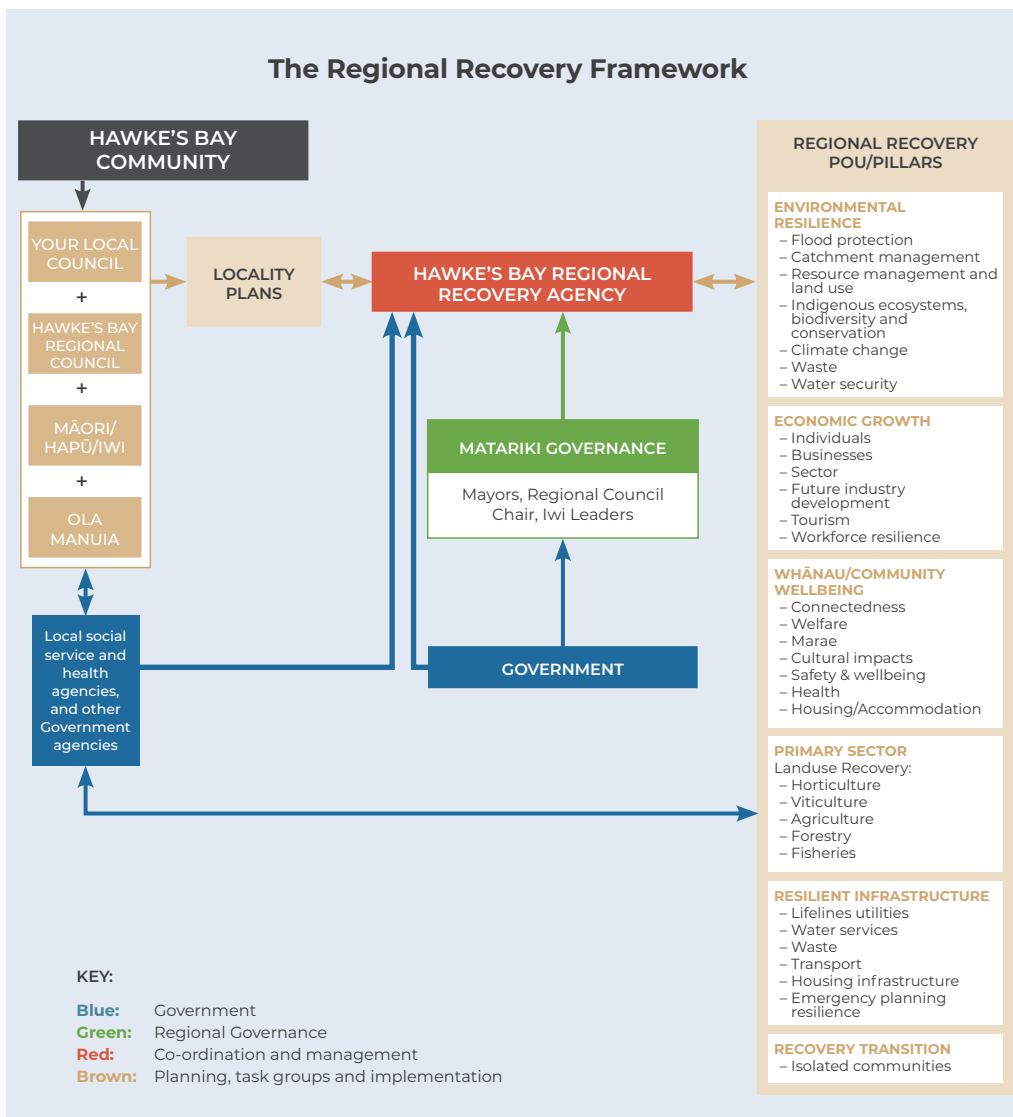
- Genuine partnership with Māori • Addressing inequities • Stronger productive economy •
- Fit-for-purpose infrastructure and life-lines • Climate resilience and adaptation •
- Working with Te Taiao, the natural environment, not against •

Te Matau a Māui Hawke's Bay faces unimaginable devastation and loss from Cyclone Gabrielle. In our lifetimes, most of us have never experienced a disaster of this scale, with this much impact on our lives, livelihoods, whānau, homes, farms, orchards, vineyards, neighbourhoods and communities. Many of our hardest hit communities are those who were fragile before this event.

Recovering will involve all of us together and is a once-in-a-lifetime opportunity to build Te Matau a Māui Hawke's Bay back better, safer and smarter.

A Hawke's Bay where everyone, everywhere, shares in the prosperity we know we can achieve. One where every household and every whānau are able to thrive. One where our taiao, our industries and businesses again flourish and where we are more resilient to climate change.

Together, Te Matau a Māui Hawke's Bay Councils, Iwi leaders and Government have agreed a framework for co-ordinating a recovery that is locally led, regionally co-ordinated and government supported.



### How it works

- Local councils, iwi and government agencies will work with their communities to bring together locality plans for recovery.
- The Regional Recovery Agency will lead the strategy work into plans across the six pou/pillars.
- The Regional Recovery Agency will then combine the locality and pou plans into a Regional Recovery Plan for Matariki Governance to approve.
- Local councils and government agencies will be responsible for funding and delivery.
- The Regional Recovery Agency will provide co-ordination, direction and confidence that delivery is happening.